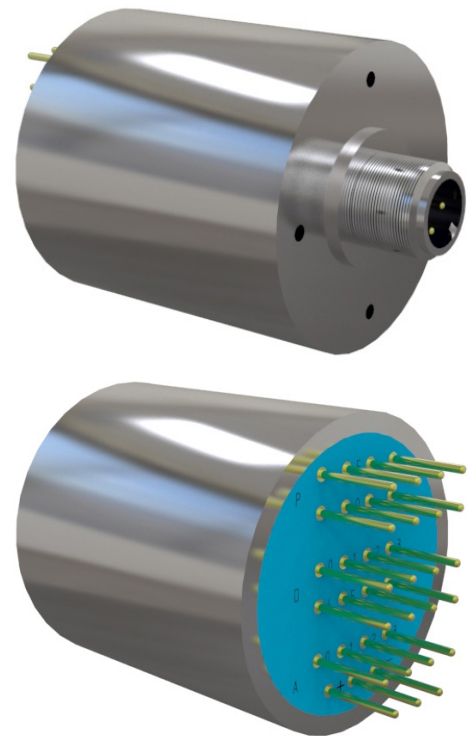


Connect your sensors to your network, in a way that suits you

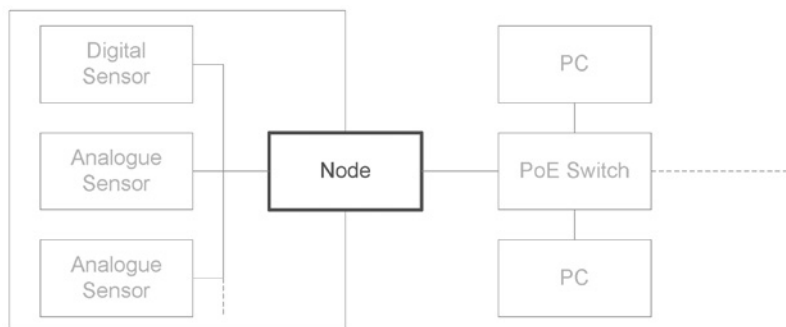
Ideally suited for quick and easy integration of “off the shelf” sensors for plant and industrial equipment monitoring. Martec’s sensor node simplifies connection to multiple sensors that may have different communication methods, allowing access to them over a network through an Ethernet M12 connector. Power is provided over the same Ethernet cable using the PoE standard. The sensor interfaces and parameters are configured over the network from a PC running the supplied or modified software. Especially suited for industrial plants where processes are monitored, but it is also applicable to other industries.

Attributes

- Hermetic M12 power over Ethernet (PoE) interface
- Access up to 12 sensors over the network, from one node
- Chain up to 256 sensors through SPI sub-nodes
- Configurable analogue and digital sensor interface (see interface configuration capabilities below)
- Reconfigurable from a networked PC
- Electrically isolated for noise immunity and protection
- Closed-circuit for security
- Panel mounted with four M2.5 holes
- 39mm diameter, 41mm length (+ 11mm M12 protrusion)



Stainless steel housing with M2 mounting holes for easy installation. When panel mounted with an O-ring, a fully hermetic seal is created.



Configurable Digital I/O

The sensor interfaces and parameters are configured over the network from a PC running the supplied or modified software. Especially suited for industrial plants where processes are monitored, but it is also applicable to other industries. The functionality that can be achieved is demonstrated below:

R/W Digital (individual reading and writing)	8
Standard digital interfaces	UART (for interfacing RS232 etc) 2 x SPI 2 x I ² C Pulse Width Modulation

Configurable Analogue Inputs

Analogue Inputs	4*
Speed	>100,000 samples per second
Output voltage reference	3.3V
Input voltage reference	0v – 3.3V
Input impedance	>100M Ω (buffered)
Alternative configuration	4-20mA standard current sense

* Can be configured as addition digital I/O

Power

Power supply	From PoE Switch
Output voltage*	5V, 9V or 12V, 2A max per pin
Power pins available	4 power and 4 ground
Output power max	3.5W

* Available in separate units